

# Ohio School Report Cards

Sign In

## 2015 - 2016 Report Card for Manchester Elementary School

View Printable PDF

- Overview
- Achievement
- Progress
- Gap Closing
- Graduation Rate
- K-3 Literacy
- Prepared for Success

SCHOOL GRADE

Coming in 2018

SCHOOL DETAILS

[VIEW DISTRICT](#)



Financial Data

These measures answer several questions about spending and performance. How much is spent, the source of the revenue and how do these measures compare across districts?

[VIEW DATA](#)



**Achievement**

The Achievement component represents the number of students who passed the state tests and how well they performed on them.

Performance Index

71.8%..... **C**

Indicators Met

18.2%..... **F**

COMPONENT GRADE

**D**

[VIEW MORE DATA](#)

[VIEW GIFTED DATA](#)



**Progress**

The Progress component looks closely at the growth that all students are making based on their past performances.

Value-Added

Overall..... **A**

Gifted..... **NR**

Lowest 20% in Achievement..... **A**

Students with Disabilities..... **A**

COMPONENT GRADE

**A**

[VIEW MORE DATA](#)



**Gap Closing**

The Gap Closing component shows how well schools are meeting the performance expectations for our most vulnerable populations of students in English language arts, math and graduation.

Annual Measurable Objectives

43.7%..... **F**

COMPONENT GRADE

**F**

[VIEW MORE DATA](#)



**Graduation Rate**

The Graduation Rate component looks at the percent of students who are successfully finishing high school with a diploma in four or five years.

Graduation Rates

*This school is not evaluated for graduation rate because there are not enough students in the graduating class.*

COMPONENT GRADE

**Not Rated**

[VIEW MORE DATA](#)



**K-3 Literacy**

The K-3 Literacy component looks at how successful the school is at getting struggling readers on track to proficiency in third grade and beyond.

K-3 Literacy Improvement

NC..... **NR**

COMPONENT GRADE

**Not Rated**

[VIEW MORE DATA](#)



**Prepared for Success**

Whether training in a technical field or preparing for work or college, the Prepared for Success component looks at how well prepared Ohio's students are for all future opportunities.

COMPONENT GRADE

**Not Rated**

[VIEW DATA](#)

# Ohio School Report Cards

Sign In

## 2015 - 2016 Report Card for Manchester Elementary School

View Printable PDF

- Overview
- Achievement**
- Progress
- Gap Closing
- Graduation Rate
- K-3 Literacy
- Prepared for Success

### Achievement



The Achievement component represents the number of students who passed the state tests and how well they performed on them.

#### COMPONENT GRADE

# D

**GRADE** C **Performance Index**

The Performance Index measures the test results of every student, not just those who score proficient or higher. There are six levels on the index and schools receive points for every student in each of these levels. The higher the achievement level, the more the points awarded in the school's index. This rewards schools and districts for improving the performance of all students, regardless of achievement level.

*Performance Index*    \* Calculation     Pie Chart     Trend

Achievement Level	Pct of Students	Points for this Level	Points Received
Advanced Plus	0.0	x 1.3	= 0.0
Advanced	13.9	x 1.2	= 16.7
Accelerated	22.0	x 1.1	= 24.2
Proficient	27.9	x 1.0	= 27.9
Basic	21.7	x 0.6	= 13.0
Limited	14.3	x 0.3	= 4.3
Untested	0.1	x 0.0	= 0.0
			<b>86.1</b>

**71.8%**  
86.1 of a possible 120.0

A = 90.0 - 100.0%  
B = 80.0 - 89.9%  
C = 70.0 - 79.9%  
D = 50.0 - 69.9%  
F = 0.0 - 49.9%

**GRADE** F **Indicators Met**

Indicators Met measures the percent of students who have passed state tests. It also includes the gifted indicator. Test results are reported for each student in a grade and subject.

[Click here](#) for a complete list of passage rates required to meet each indicator.

*Indicators Met %*    \* Indicators     Comparison     Achievement Levels     Trend

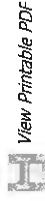
Grade	Subject	Percentage	Pass
3rd Grade	English Language Arts	72.1%	<input checked="" type="checkbox"/>
	Mathematics	72.9%	<input type="checkbox"/>
4th Grade	English Language Arts	60.9%	<input type="checkbox"/>
	Mathematics	56.9%	<input type="checkbox"/>
5th Grade	Social Studies	70.8%	<input type="checkbox"/>
	English Language Arts	69.8%	<input type="checkbox"/>
	Mathematics	69.8%	<input type="checkbox"/>
6th Grade	Science	79.4%	<input checked="" type="checkbox"/>
	English Language Arts	50.8%	<input type="checkbox"/>
6th Grade	Mathematics	44.6%	<input type="checkbox"/>

**18.2%**  
2 out of 11

A = 90.0 - 100.0%  
B = 80.0 - 89.9%  
C = 70.0 - 79.9%  
D = 50.0 - 69.9%  
F = 0.0 - 49.9%

**GIFTED INDICATOR NC**

# 2015 - 2016 Report Card for Manchester Elementary School



View Printable PDF

- Overview
- Achievement
- Progress
- Gap Closing
- Graduation Rate
- K-3 Literacy
- Prepared for Success

## Progress



The Progress component looks closely at the growth that all students are making based on their past performances.

For more detailed data on Progress and Value-Added, [click here](#).

### COMPONENT GRADE

A

GRADE

A

### Overall

This measures the progress for all students in math, ELA, science and social studies using tests in grades 4-8 and some end-of-course exams.

GRADE

Not Rated

### Gifted Students

This measures the progress for students identified as gifted in reading, math, science, social studies and/or superior cognitive ability.

GRADE

A

### Students in the Lowest 20% in Achievement

This measures the progress for students identified as the lowest 20% statewide in reading, math, science or social studies achievement.

GRADE

A

### Students with Disabilities

This measures the progress for students with disabilities.

### Progress Details

\* Value-Added Data  Progress vs. Performance Index

These tables show the Progress scores by test grade and subject for students in grades 4-8 and some end-of-course tests, and includes up to three years of data as available.

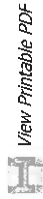
Test Grade	Progress Score			
	English Language Arts	Mathematics	Social Studies	Science
All Grades	6.65	2.48	-1.26	6.43
4th Grade	0.64	-3.58		
5th Grade	6.96	9.97		6.43
6th Grade	4.04	-1.76	-1.26	
				All Tests
				6.98
				-1.71
				12.55
				1.06

*High School English*     *High School Math Value Added*  
*Language Arts Value Added*     *data is not available for this school*  
*data is not available for this school*

Although Progress scores are not assigned letter grades at this level of detail, the grading scale applied at the Overall (All Students, All Tests) level is:

A = 2.00 and up  
 B = 1.00 to 1.99  
 C = -1.00 to 0.99  
 D = -2.00 to -1.01  
 F = below -2.00

# 2015 - 2016 Report Card for Manchester Elementary School



Prepared for Success

K-3 Literacy

Graduation Rate

Gap Closing

Progress

Achievement

## Gap Closing



The Gap Closing component shows how well schools are meeting the performance expectations for our most vulnerable populations of students in English language arts, math and graduation.

### COMPONENT GRADE

**F**

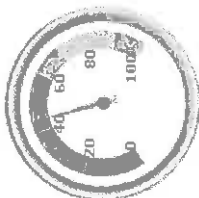
GRADE

**F**

### Annual Measurable Objectives

Annual Measurable Objectives (AMOs) compare the performance of student groups to a state goal which is displayed as the red line in the following charts. These charts show how well each group achieves that goal in ELA, math and graduation - and emphasize any achievement gaps that exist between groups. The ultimate goal is for all groups to achieve at high levels.

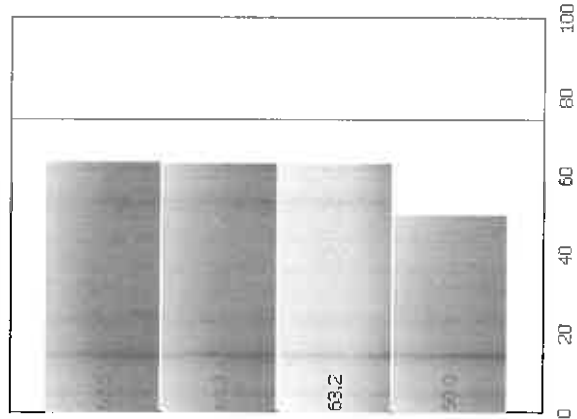
AMO Points



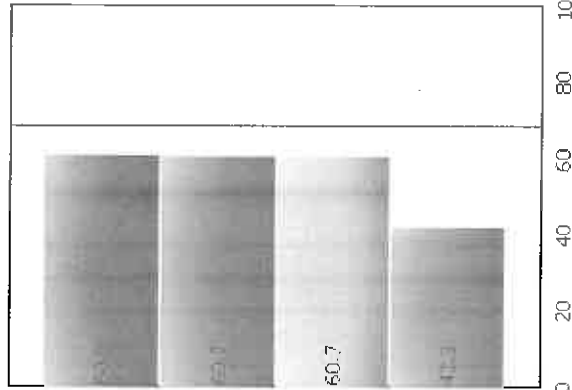
**43.7%**

- A = 90.0 - 100.0%
- B = 80.0 - 89.9%
- C = 70.0 - 79.9%
- D = 60.0 - 69.9%
- F = 0.0 - 59.9%

### English Language Arts



### Math



*This school does not have an Annual Measurable Objective for Graduation Rate because there were not enough students to evaluate.*

### Graduation Rate

The red line on each graph identifies the Annual Measurable Objective. The 2016 AMO for ELA is 74.2%, for Math is 68.5%, and for Graduation Rate is 82.8%. Subgroups with fewer than 30 students are not rated and do not appear on the graphs.

# Ohio School Report Cards

Sign In

## 2015 - 2016 Report Card for Manchester Elementary School

 [View Printable PDF](#)

- Overview
- Achievement
- Progress
- Gap Closing
- Graduation Rate
- K-3 Literacy**
- Prepared for Success

### K-3 Literacy



The K-3 Literacy component looks at how successful the school is at getting struggling readers on track to proficiency in third grade and beyond.

#### COMPONENT GRADE

**Not Rated**

#### GRADE

**NR**

#### K-3 Literacy Improvement

*This school is not graded because less than 5% of kindergarten students are not on-track this year.*

***This school has not been graded because less than 5% of kindergarten students are not on-track this year.***

In your school...

Details of Measure

3rd Grade Reading Guarantee

On-Track by Grade Level

Ohio's Third Grade Reading Guarantee ensures that students are successful in reading before moving on to fourth grade. Schools must provide supports for struggling readers in early grades. If a child appears to be falling behind in reading, the school will immediately start a Reading Improvement and Monitoring Plan. The program ensures that every struggling reader gets the support he or she needs to learn and achieve.

Students have multiple opportunities to meet promotion requirements including meeting a minimum promotion score on the reading portion of the state's third grade English language arts test given twice during the school year. Students have an additional opportunity to take the state assessment in the summer, as well as a district-determined alternative assessment.

How many third graders met the Third Grade Reading Guarantee requirements for promotion to 4th grade? **100.0%**

How many third graders scored proficient on the state Reading test? **72.1%**