

# Ohio School Report Cards

Sign In

## 2015 - 2016 Report Card for Manchester High School

View Printable PDF

- Overview
- Achievement
- Progress
- Gap Closing
- Graduation Rate
- K-3 Literacy
- Prepared for Success

SCHOOL GRADE

Coming in 2018

SCHOOL DETAILS

VIEW DISTRICT



Financial Data

These measures answer several questions about spending and performance. How much is spent, the source of the revenue and how do these measures compare across districts?

VIEW DATA



Achievement

The Achievement component represents the number of students who passed the state tests and how well they performed on them.

COMPONENT GRADE

D

VIEW MORE DATA

VIEW GIFTED DATA

Performance Index

65.8%..... D

Indicators Met

33.3%..... F



Progress

The Progress component looks closely at the growth that all students are making based on their past performances.

COMPONENT GRADE

B

VIEW MORE DATA

Value-Added

Overall..... A

Gifted..... NR

Lowest 20% in Achievement..... A

Students with Disabilities..... C



Gap Closing

The Gap Closing component shows how well schools are meeting the performance expectations for our most vulnerable populations of students in English language arts, math and graduation.

COMPONENT GRADE

F

VIEW MORE DATA

Annual Measurable Objectives

33.3%..... F



Graduation Rate

The Graduation Rate component looks at the percent of students who are successfully finishing high school with a diploma in four or five years.

COMPONENT GRADE

A

VIEW MORE DATA

Graduation Rates

98.0% of students graduated in 4 years..... A

100.0% of students graduated in 5 years..... A



K-3 Literacy

The K-3 Literacy component looks at how successful the school is at getting struggling readers on track to proficiency in third grade and beyond.

COMPONENT GRADE

Not Rated

VIEW MORE DATA

K-3 Literacy Improvement

NC..... NR



Prepared for Success

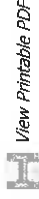
Whether training in a technical field or preparing for work or college, the Prepared for Success component looks at how well prepared Ohio's students are for all future opportunities.

COMPONENT GRADE

D

VIEW DATA

# 2015 - 2016 Report Card for Manchester High School



- Overview
- Achievement
- Progress
- Gap Closing
- Graduation Rate
- K-3 Literacy
- Prepared for Success

## Achievement



The Achievement component represents the number of students who passed the state tests and how well they performed on them.

### COMPONENT GRADE

**D**

### GRADE

**D**

### Performance Index

The Performance Index measures the test results of every student, not just those who score proficient or higher. There are six levels on the index and schools receive points for every student in each of these levels. The higher the achievement level, the more the points awarded in the school's index. This rewards schools and districts for improving the performance of all students, regardless of achievement level.

### Performance Index



**65.8%**

- A = 90.0 - 100.0%
- B = 80.0 - 89.9%
- C = 70.0 - 79.9%
- D = 50.0 - 69.9%
- F = 0.0 - 49.9%

• Calculation  Pie Chart  Trend

Achievement Level	Pct of Students	Points for this Level	Points Received
Advanced Plus	0.0	1.3	0.0
Advanced	7.4	1.2	8.9
Accelerated	15.5	1.1	17.0
Proficient	32.8	1.0	32.8
Basic	23.2	0.6	13.9
Limited	21.0	0.3	6.3
Untested	0.0	0.0	0.0
			<b>79.0</b>

### GRADE

**F**

### Indicators Met

Indicators Met measures the percent of students who have passed state tests. It also includes the gifted indicator. Test results are reported for each student in a grade and subject.

[Click here](#) for a complete list of passage rates required to meet each indicator.

### Indicators Met %



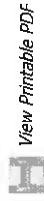
- A = 90.0 - 100.0%
- B = 80.0 - 89.9%
- C = 70.0 - 79.9%
- D = 50.0 - 69.9%
- F = 0.0 - 49.9%

• Indicators  Comparison  Achievement Levels  Trend

Grade	Indicators	Comparison	Achievement Levels
7th Grade	English Language Arts		63.6% <b>X</b>
	Mathematics		48.4% <b>X</b>
8th Grade	English Language Arts		66.7% <b>X</b>
	Mathematics		40.4% <b>X</b>
	Science		64.9% <b>X</b>
OGT, 11th Graders	Mathematics		98.3% <input checked="" type="checkbox"/>
	Reading		98.3% <input checked="" type="checkbox"/>
	Science		94.9% <input checked="" type="checkbox"/>
	Social Studies		98.3% <input checked="" type="checkbox"/>
	Writing		98.3% <input checked="" type="checkbox"/>

**GIFTED INDICATOR X**

# 2015 - 2016 Report Card for Manchester High School



- Overview
- Achievement
- Progress**
- Gap Closing
- Graduation Rate
- K-3 Literacy
- Prepared for Success

## Progress



The Progress component looks closely at the growth that all students are making based on their past performances.

For more detailed data on Progress and Value-Added, [click here](#).

### COMPONENT GRADE

B

GRADE

A

### Overall

This measures the progress for all students in math, ELA, science and social studies using tests in grades 4-8 and some end-of-course exams.

GRADE

Not  
Rated

### Gifted Students

This measures the progress for students identified as gifted in reading, math, science, social studies and/or superior cognitive ability.

GRADE

A

### Students in the Lowest 20% in Achievement

This measures the progress for students identified as the lowest 20% statewide in reading, math, science or social studies achievement.

GRADE

C

### Students with Disabilities

This measures the progress for students with disabilities.

### Progress Details

Value-Added Data

Progress vs. Performance Index

These tables show the Progress scores by test grade and subject for students in grades 4-8 and some end-of-course tests, and includes up to three years of data as available.

Test Grade	Progress Score		
	English Language Arts	Mathematics	Science
All Grades	7.11	1.09	0.82
7th Grade	6.75	3.53	6.87
8th Grade	4.91	-1.82	0.82
			All Tests
			5.54
			6.87
			2.69

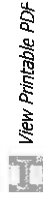
Test Grade	Progress Score	
	English I	English II
High School	0.45	3.02

Test Grade	Progress Score	
	Algebra I	Math II
High School	0.95	-1.71

Although Progress scores are not assigned letter grades at this level of detail, the grading scale applied at the Overall (All Students, All Tests) level is:

- A = 2.00 and up
- B = 1.00 to 1.99
- C = -1.00 to 0.99
- D = -2.00 to -1.01
- F = below -2.00

# 2015 - 2016 Report Card for Manchester High School



Prepared for Success

K-3 Literacy

Graduation Rate

Gap Closing

Progress

Achievement

## Gap Closing



The Gap Closing component shows how well schools are meeting the performance expectations for our most vulnerable populations of students in English language arts, math and graduation.

### COMPONENT GRADE

**F**

GRADE

**F**

AMO Points



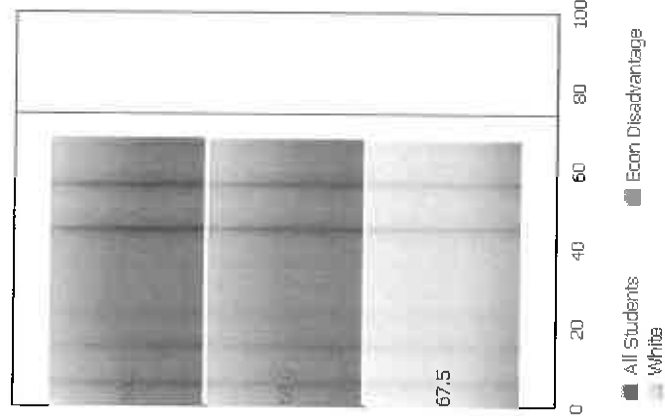
**33.3%**

- A = 90.0 - 100.0%
- B = 80.0 - 89.9%
- C = 70.0 - 79.9%
- D = 60.0 - 69.9%
- F = 0.0 - 59.9%

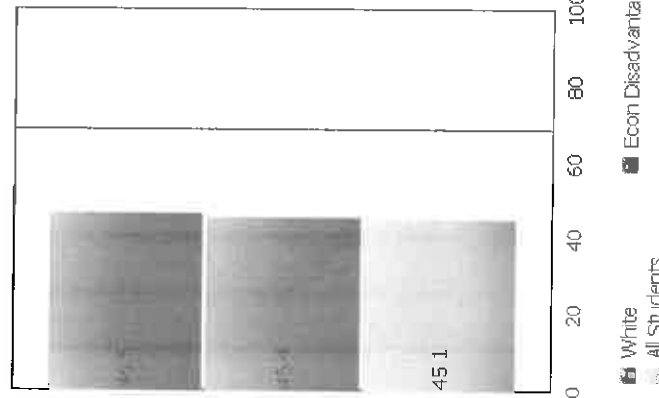
### Annual Measurable Objectives

Annual Measurable Objectives (AMOs) compare the performance of student groups to a state goal which is displayed as the red line in the following charts. These charts show how well each group achieves that goal in ELA, math and graduation - and emphasize any achievement gaps that exist between groups. The ultimate goal is for all groups to achieve at high levels.

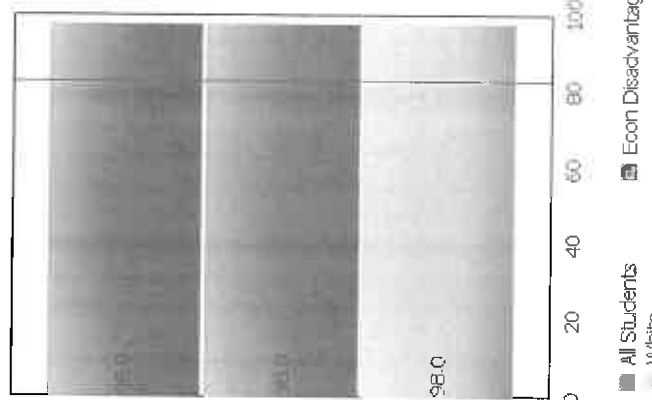
#### English Language Arts



#### Math



#### Graduation Rate



The red line on each graph identifies the Annual Measurable Objective. The 2016 AMO for ELA is 74.2% for Math is 68.5%, and for Graduation Rate is 82.8%. Subgroups with fewer than 30 students are not rated and do not appear on the graphs.

# Ohio School Report Cards

Sign In

## 2015 - 2016 Report Card for Manchester High School

View Printable PDF

- Overview
- Achievement
- Progress
- Gap Closing
- Graduation Rate**
- K-3 Literacy
- Prepared for Success

### Graduation Rate



The Graduation Rate component looks at the percent of students who are successfully finishing high school with a diploma in four or five years.

#### COMPONENT GRADE

# A

#### 4-Year Graduation Rate

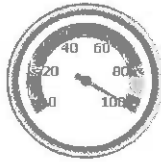
The 4-year graduation rate applies to the Class of 2015 who graduated within four years, i.e. students who entered the 9th grade in 2012 and graduated by 2015.

GRADE

# 98.0%

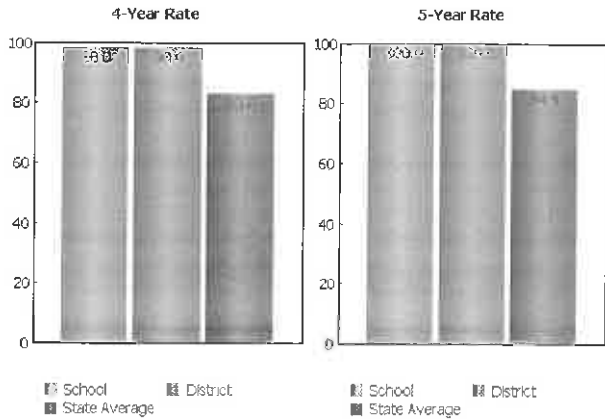
# A

- A = 93.0 - 100.0%
- B = 89.0 - 92.9%
- C = 84.0 - 88.9%
- D = 79.0 - 83.9%
- F = 0.0 - 78.9%



#### Comparison

#### Trend



#### 5-Year Graduation Rate

The 5-year graduation rate applies to the Class of 2014 who graduated within five years, i.e. students who entered the 9th grade in 2011 and graduated by 2015.

GRADE

# 100.0%

# A

- A = 95.0 - 100.0%
- B = 90.0 - 94.9%
- C = 85.0 - 89.9%
- D = 80.0 - 84.9%
- F = 0.0 - 79.9%



# 2015 - 2016 Report Card for Manchester High School

View Printable PDF

- Overview
- Achievement
- Progress
- Gap Closing
- Graduation Rate
- K-3 Literacy
- Prepared for Success

## Prepared for Success



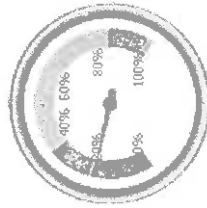
Whether training in a technical field or preparing for work or college, the Prepared for Success component looks at how well prepared Ohio's students are for all future opportunities.

### COMPONENT GRADE

D

### COMPONENT GRADE

D



18.8%

- A = 85.0% - 100.0%
- B = 65.0% - 84.9%
- C = 34.0% - 64.9%
- D = 15.0% - 33.9%
- F = 0.0% - 14.9%

Number of students that earned a remediation free score on all parts of the ACT or SAT, earned an honors diploma, and/or earned an industry-recognized credential

Number of	Point Value	Points Earned
19	1	19.0

The number of "bonus" students that count an additional 0.3 bonus points each, because they did the above and also earned a 3 or higher on at least one AP exam; earned a 4 or higher on at least one IB exam; and/or earned at least three college credits before leaving high school

Total Points:	21.1
Graduation Cohort:	112
Percentage:	18.8%

- Graduates Ready
- College Ready

### Outcomes after High School Graduation

Districts and schools have long-term impacts on student outcomes. The Prepared for Success component provides information on how schools prepare students for different pathways of college and career success. It also provides insights on how those students do once they leave high school. What happens beyond the diploma is an important indicator of how well schools are preparing students.

The University System of Ohio provides district reports on enrollment and remediation of high school graduates attending in-state, public colleges and universities.



What Percentage of the 2013 Graduating Class Entered College within Two Years? **52.9%**

What Percentage of the 2009 Graduating Class Graduated from College within Six Years of Leaving High School? **18.0%**